

FINOS

Fintech
Open Source
Foundation



The Unexpected Story of NearForm

FINOS Host
James McLeod, FINOS Director of Community

NearForm Presenters
Conor O'Neill - Chief Product Officer
Ger O'Shaughnessy - Head of Propositions

August 2020

Presenters



CONOR O'NEILL

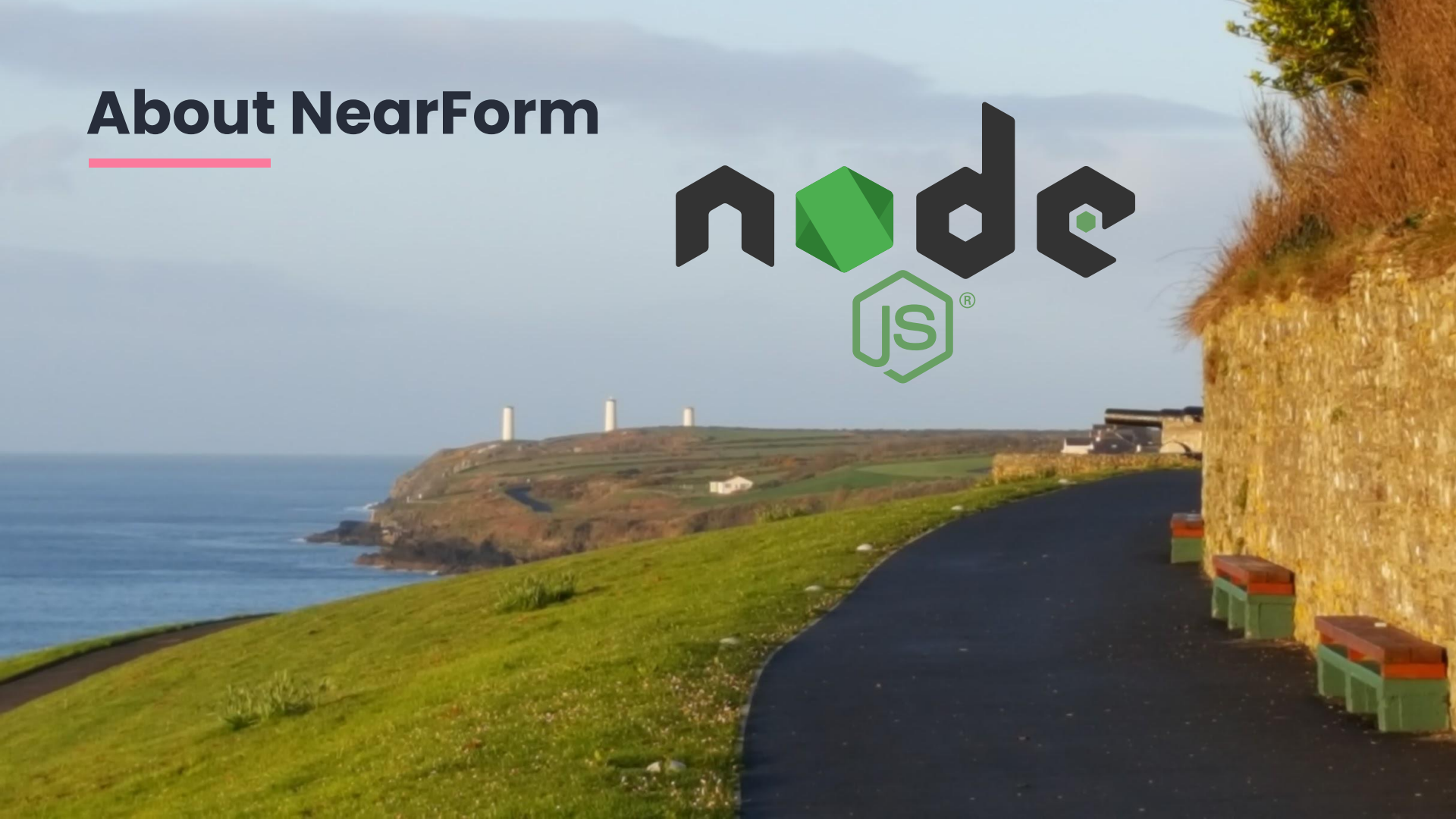
**CHIEF PRODUCT
OFFICER**

GER O'SHAUGHNESSY

**HEAD OF
PROPOSITIONS**



About NearForm



Example NearForm OSS



Clinic.js

Clinic.js is our suite of Node.js performance analysis tools. It includes Doctor, Bubbleprof, Flame and Autocannon. It uses TensorFlow.js ML to ensure data accuracy in noisy environments.



QUIC HTTP/3

The next version of HTTP is coming soon and NearForm Research is leading its implementation on Node.js. HTTP/3 is a major departure from HTTP/1.1 and HTTP/2.



Worker Threads

The worker_threads module enables the use of threads that execute JavaScript in parallel.

Workers (threads) are useful for performing CPU-intensive JavaScript operations.

InnerSource



InnerSource enables organisations to uncover creativity, by removing obstacles for collaboration.

It involves:

- Cultural Inventory
- Building an InnerSource Visibility platform
- Engineering confidence into customers' Software Delivery Life Cycles

**Why
invest so
much in
OSS?**



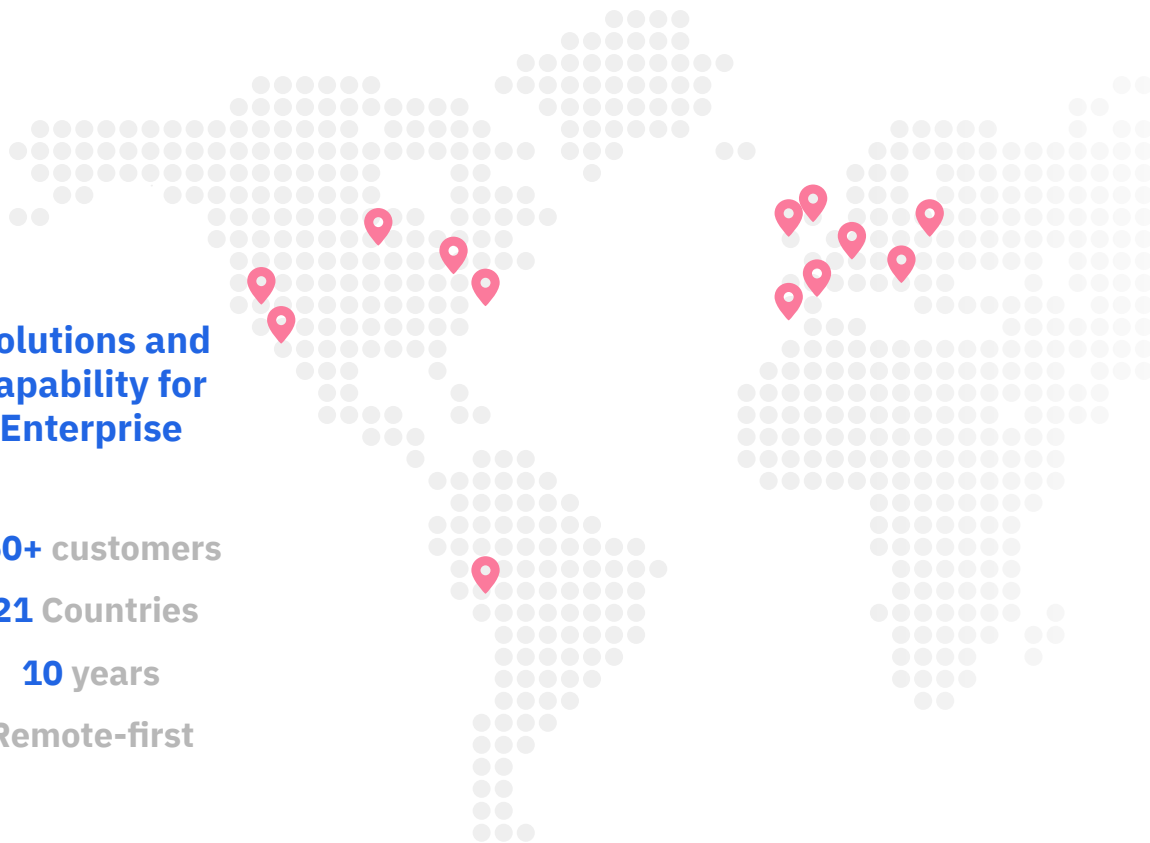
Solutions and
capability for
Enterprise

150+ customers

21 Countries

10 years

Remote-first



TELUS

CONDÉ NAST

EY

Uber

priceline.com

BOSCH

CapitalOne

Florida Blue

Nutrien

THE LINUX FOUNDATION

Walmart

MOODY'S

ADP

dpd

News Corp

ATG

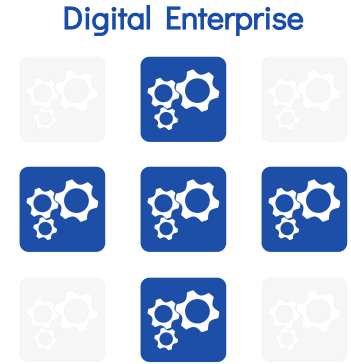
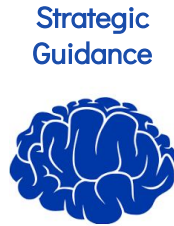
The New York Times

State Street

AMERICAN EXPRESS

ancestry

Engagement models



Consult

Trusted Advisor
Technical Directors
Business Framing

Deliver

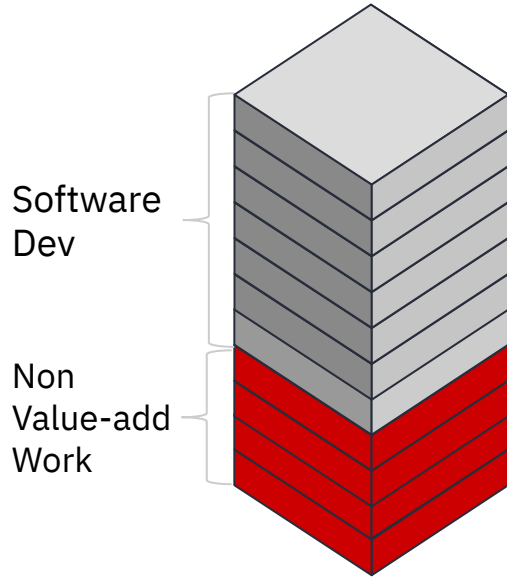
Research and Design
Accelerated Development
Deployment
Support

Transform

Accelerated Enterprise
Training and Capability
Strategic roadmap
Opensource

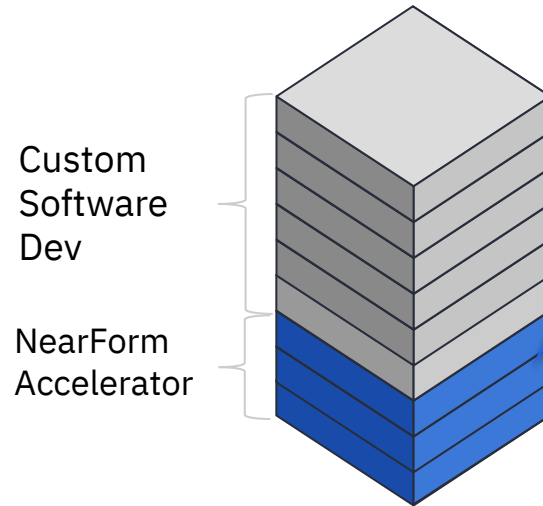
NearForm Accelerators: for Development Projects

Typical Project



Tech choices, Tools, Environment Set-up,
Learning, on-boarding, CI/CD set-up, etc.

Accelerated Project



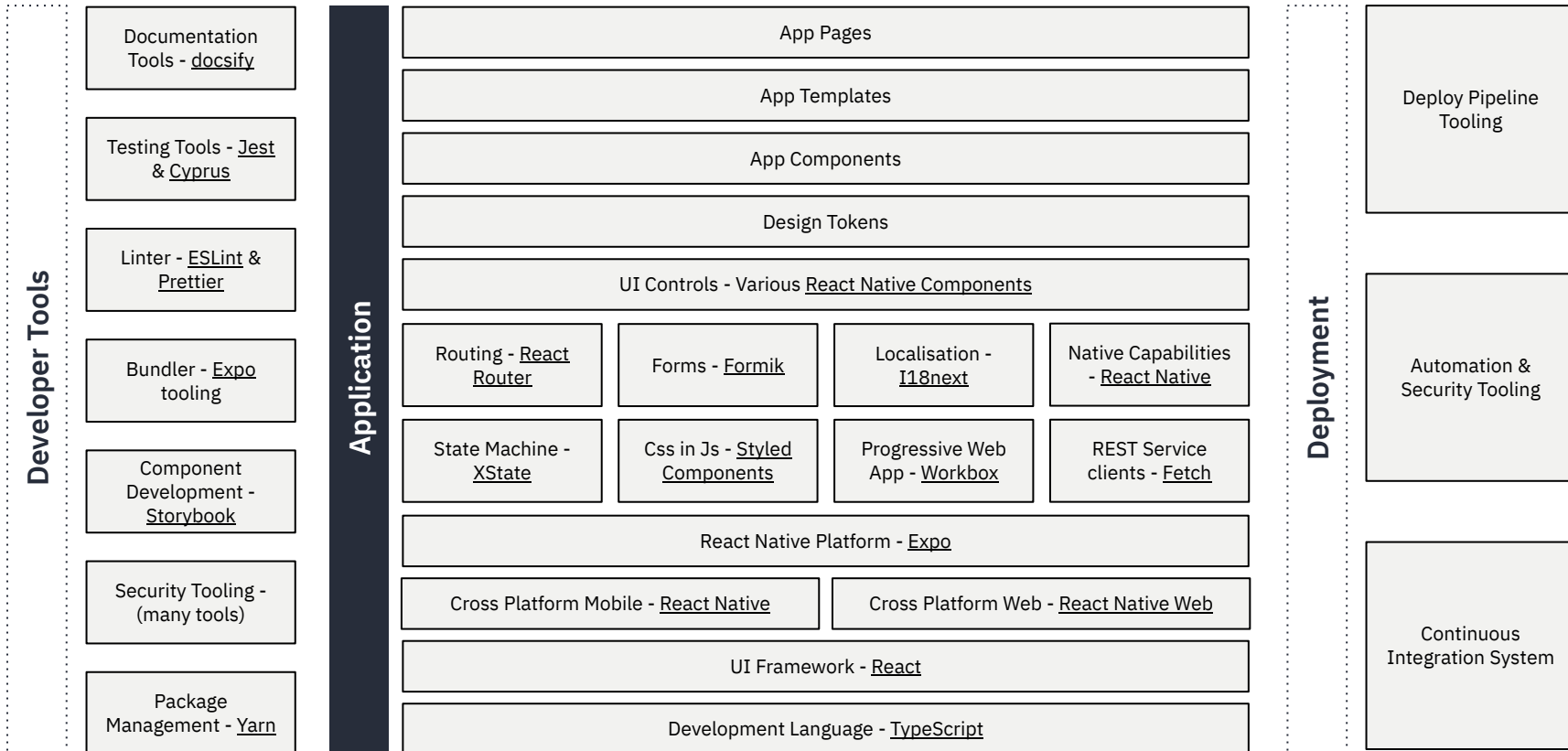
Deploy Accelerator

Tech stack, tools, processes,
documentation, CI/CD, archetypes,
training, opensource



Polaris architecture

Release
Channels

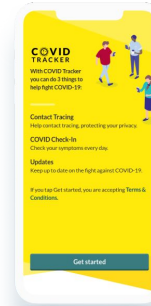
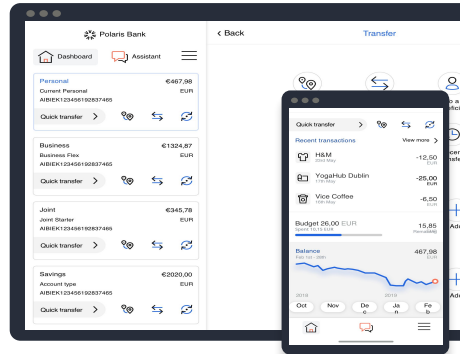


NearForm Accelerators: Impact

OPEN BANKING

NearForm

IBM

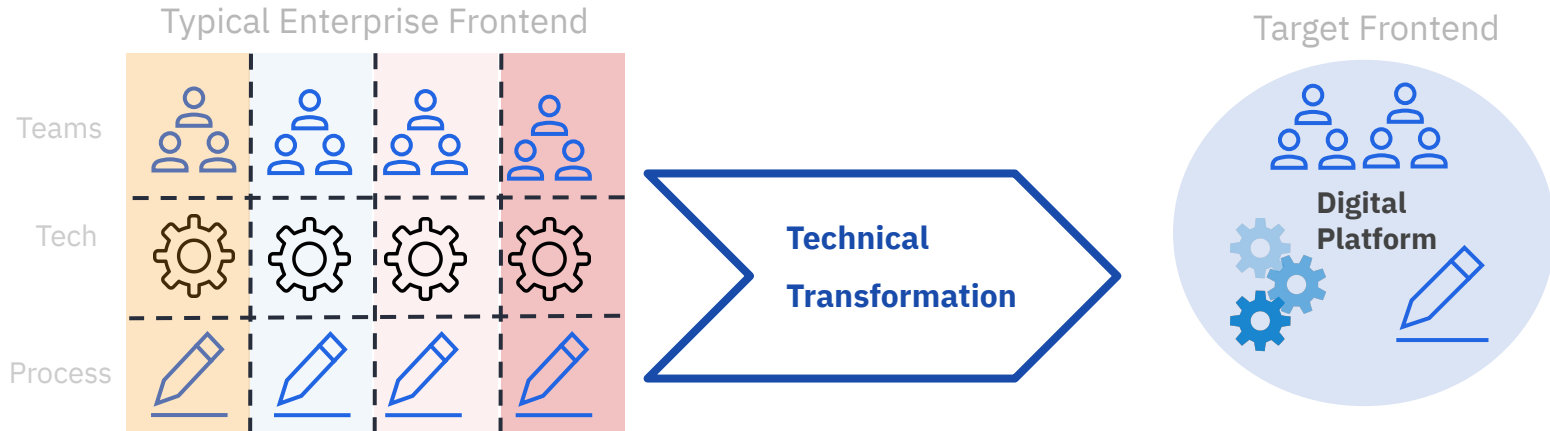


Scalability

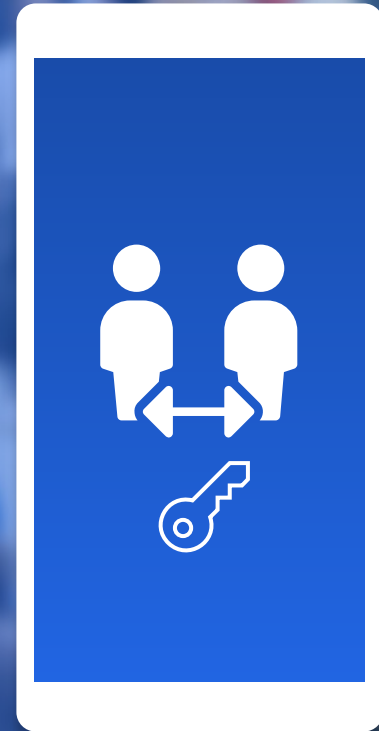
Opensource

Platform Approach

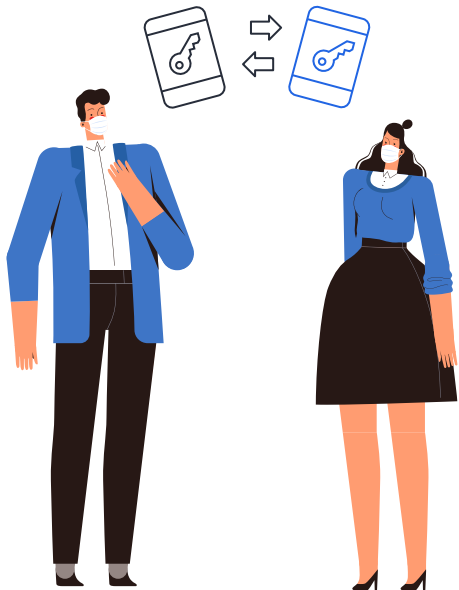
NearForm Accelerators: Digital platform



Contact Tracing / Exposure Notification

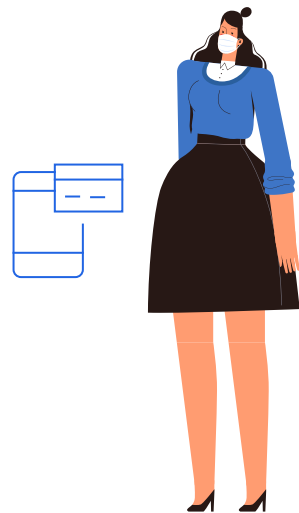
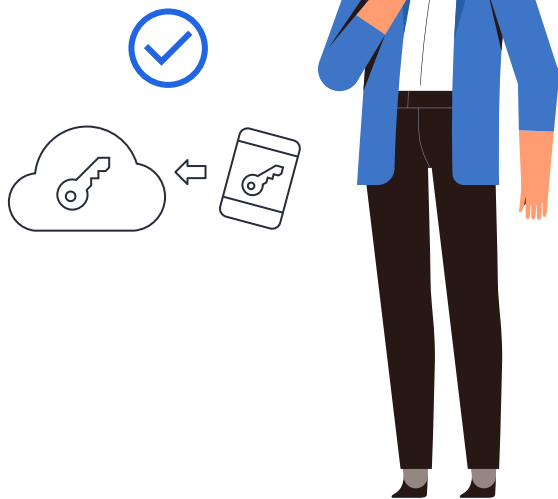


How Exposure Notifications Work



When A and B are near each other, their phones exchange anonymous key codes.

When A becomes infected, he updates his status in the app and gives his consent to share his key codes with the back-end.



The app on B's phone regularly downloads the infected keys to check for matching codes. It alerts her that somebody she has been near has tested positive.

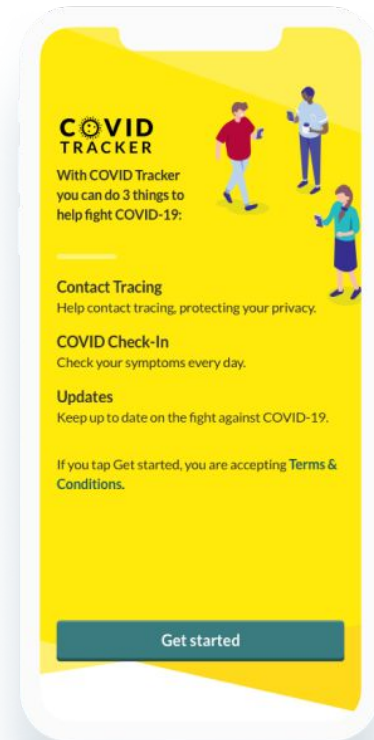
COVID Tracker App for Ireland

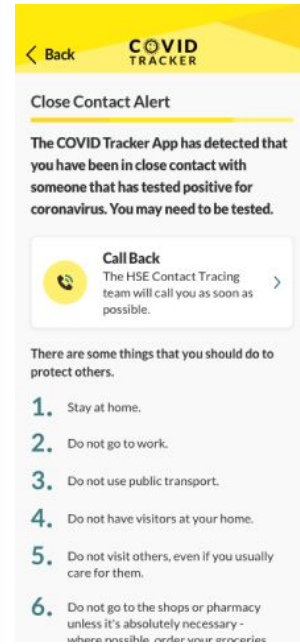
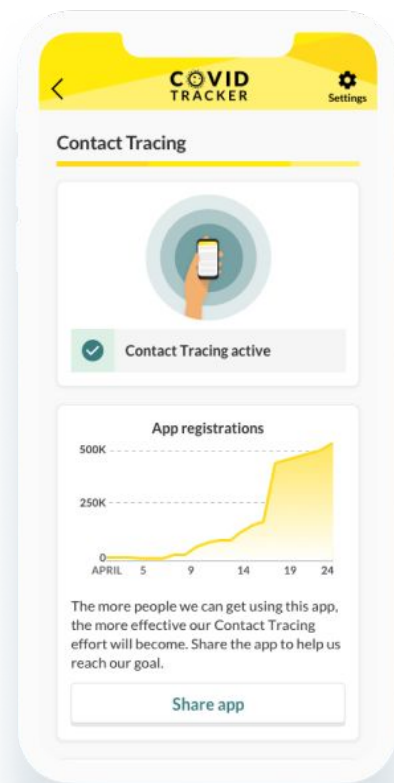
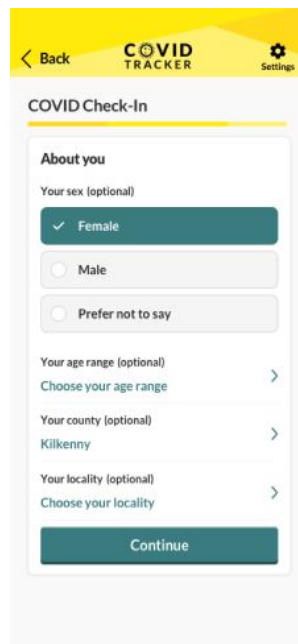
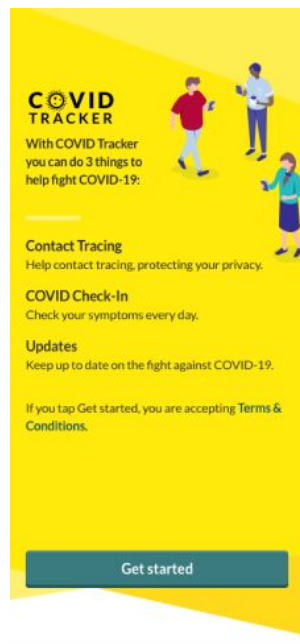
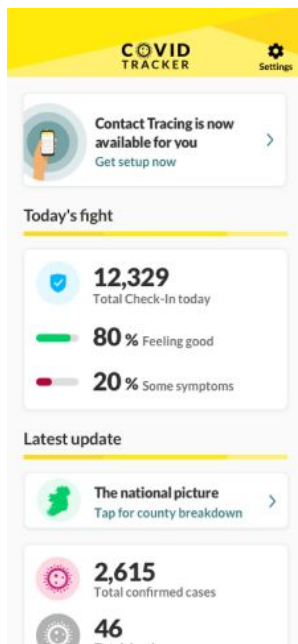
All-in-one application available in two languages - Irish and English.

- ✓ Contact Tracing
- ✓ Symptom Check-In
- ✓ Information Updates

App installed by
over **40%** of adults
in **4 weeks**

137 confirmed app
exposure
notifications in **4**
weeks





SOLUTION HIGHLIGHTS

Jurisdictions: 9 to-date

Population Coverage: 53 million by September 2020

Average Uptake: 40% of addressable population

Delivery Time: 4-7 weeks

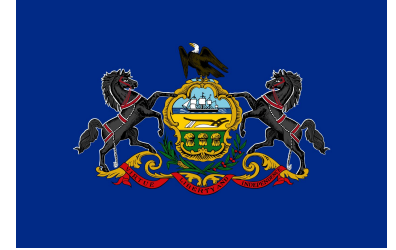
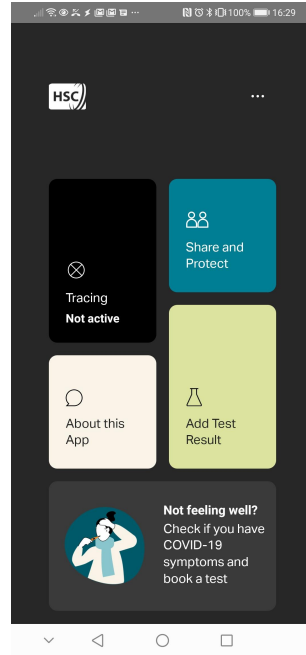
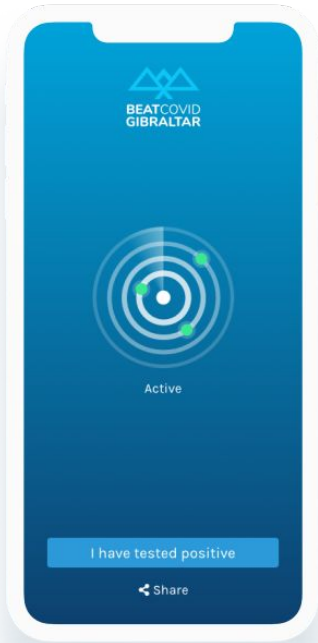
Average Security Issues: 0

Interoperability: World's first

Open Source: Code to Linux Foundation Public Health

<https://github.com/covidgreen>

Other Jurisdictions



Full circle to Open Source

Benefiting even more from open source

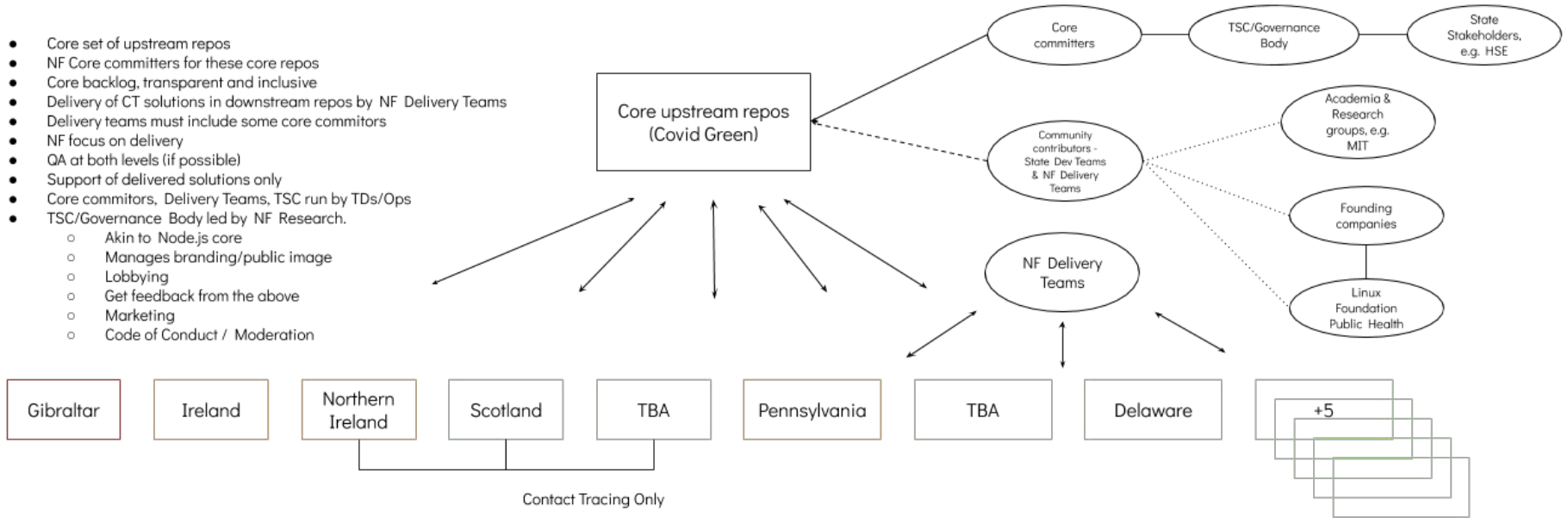
NearForm worked with the Irish Government to [donate the source code](#) for their app to the not-for-profit Linux Foundation Public Health, for use by any PHA to help fight COVID-19.

COVID Green benefits from the inputs of many countries, states and vendors.



Scaling

- Core set of upstream repos
- NF Core committers for these core repos
- Core backlog, transparent and inclusive
- Delivery of CT solutions in downstream repos by NF Delivery Teams
- Delivery teams must include some core committers
- NF focus on delivery
- QA at both levels (if possible)
- Support of delivered solutions only
- Core committers, Delivery Teams, TSC run by TDs/Ops
- TSC/Governance Body led by NF Research.
 - Akin to Node.js core
 - Manages branding/public image
 - Lobbying
 - Get feedback from the above
 - Marketing
 - Code of Conduct / Moderation



Outro

Outro:

Questions we feel we have raised today....

- (1) Open Banking - what is the feeling US/UK on what's next?
- (2) Frontend Technical Debt - are Accelerator frameworks part of the answer?
- (3) Covid Story - is this really an opensource coming of age story too?

Link to open banking page:

<https://community.nearform.com/api-banking>

Covid Green:

<https://github.com/covidgreen>

Q&A



United States:

+ 1 916 235 6459

nearform.com

International:

+ 353 1 514 3545

conor.oneill@nearform.com

ger.oshaughnessy@nearform.com